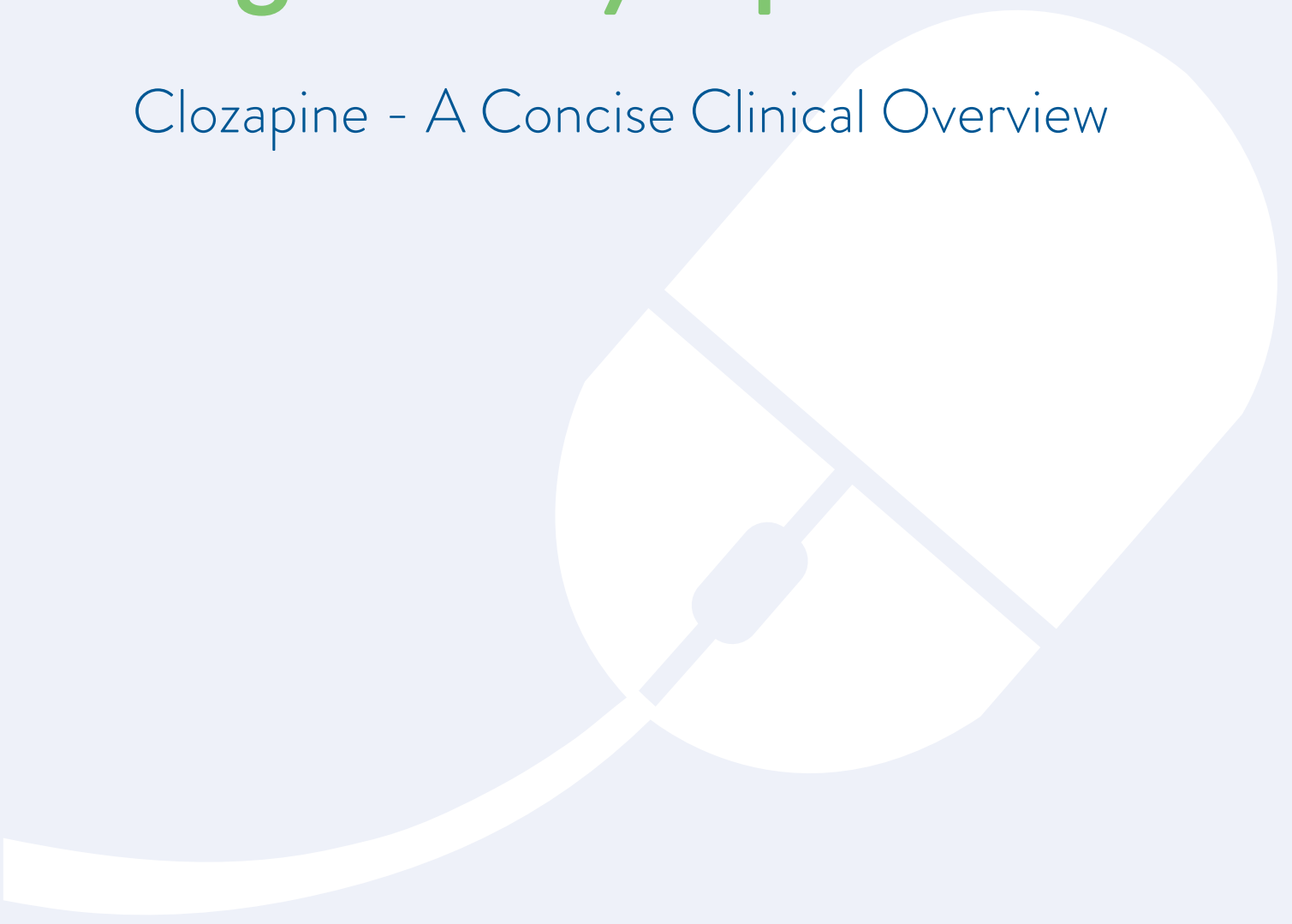




RESOURCES

# Signs & Symptoms

Clozapine - A Concise Clinical Overview

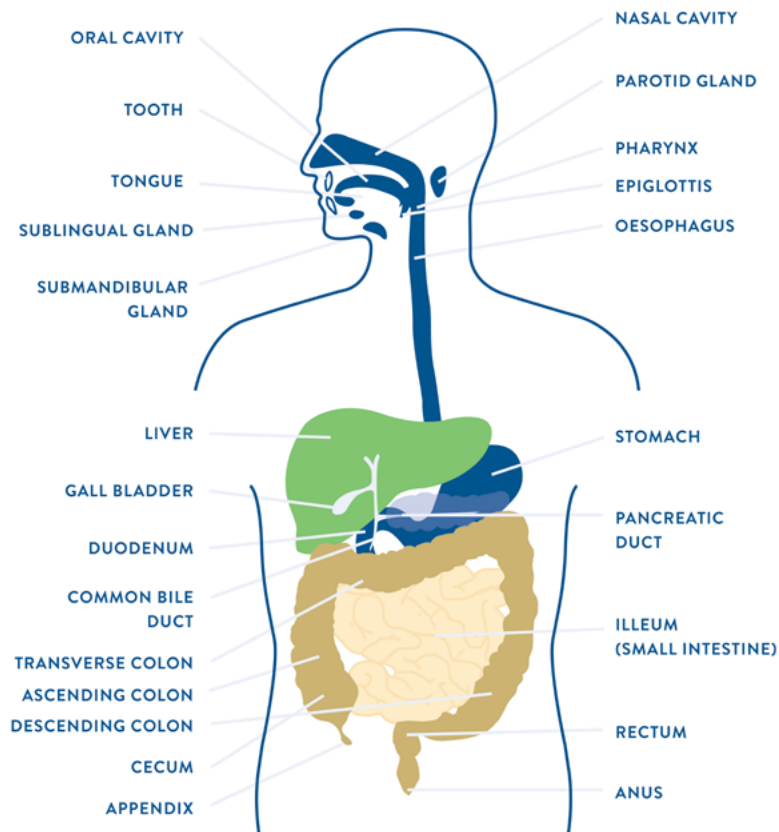




## Chronic hypersalivation can result in the following signs and symptoms:

1. Swelling of salivary glands
2. Parotitis (the inflammation of parotid glands which are the major salivary glands)
3. Skin irritation
4. Skin infection
5. Aspiration pneumonia

# Clozapine-Induced Gastrointestinal Hypomotility (CIGH)



**Patients with CIGH may present with one or more of the following symptoms:**

- Constipation
- Indigestion (dyspepsia)
- Dysphagia (issues with swallowing)
- Abdominal pain or cramps
- Distended abdomen or bloating
- Fever
- Nausea
- Overflow diarrhoea
- Breath smelling like faeces
- Faecal vomiting

# BRISTOL STOOL CHART



1

## SEVERE CONSTIPATION

Separate hard lumps



2

## MILD CONSTIPATION

Lumpy and sausage like



3

## NORMAL

A sausage shape with cracks in the surface



4

## NORMAL

Like a smooth, soft sausage or snake



5

## LACKING FIBRE

Soft blobs with clear-cut edges



6

## MILD DIARRHEA

Mushy consistency with ragged edges



7

## SEVERE DIARRHEA

Liquid consistency with no solid pieces